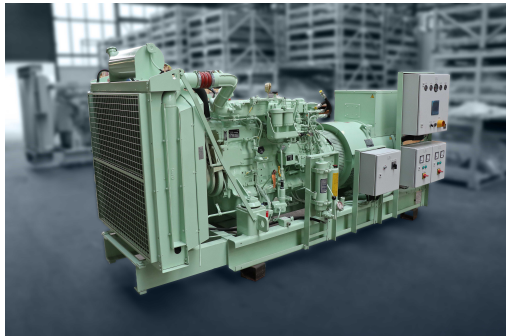


# #35971

## Marine Data Sheet



### Engine Equipment

- Basis engine
- Air filter(s), marine type
- Lube oil cooler
- Cooling pump (HT circuit)
- 
- Duplex change-over fuel oil filter with dip tray
- Fuel oil pressure gauge, mounted on the engine
- Flameproof flexible fuel oil hoses
- Fuel lift pump and pre-filter
- Turbocharger water cooled
- Intercooler water-cooled
- Exhaust manifold(s) water-cooled
- 
- Hand pump for lube oil draining
- Double fuel oil pipes with alarm sensor
- Fuel injection pump with electrical stop valve and GAC governor

### Specific Fuel and Oil Consumption

100% Load	[g/kWh]	215
50% Load	[g/kWh]	212
Lube oil consumption (max)	[g/h]	435

### Alternator Equipment

The alternator is a 2-bearings, brushless, self-exciting, self-regulating with revolving field, in-ventilated, drip-proof design and with damper windings included.  
The voltage regulation is maintained within limits of +/- 0,5 % from no load to full load at any power factor between 0,8 and 1,0.

Service	Unit	Value
Power	kVA	437,5
Power	kW	350
Speed	r.p.m.	1800
Standard Voltage	V	450
Frequency	Hz	60
Phases		3

### Engine and Alternator

Engine	MAN	D2876LE201
Alternator	Mecc Alte	ECO40-1S/4

### Diesel Engine Data

Engine Power	kW	405
Number of Cylinders	Pcs.	6
Arrangement of Cylinders		inliner
Bore/Stroke	mm	128/166
Piston displacement	litres	912,8
Intake Air Volume Flow	m³/h	1720
Exhaust gas heat	kW	328
Exhaust gas temp.	°C	570
Exhaust gas mass flow	kg/h	2190
Exhaust gas volume flow	m³/h	5308
Exhaust gas back press. max	hPa	20/80
Cooling water heat	kW	150
Intercooler heat rate	kW	80
Radiation heat	kW	24

### Classification

DNV-GL (GL)

### Alternator Data

Voltage	V	450
Frequency	Hz	60
Speed	r.p.m.	1800
Insulation Stator/Rotor	Cl.	H/H
Temperature Rise	Cl.	H
Enclosure	IP	23
Power	kW	350
Power	kVA	437,5

MADE IN GERMANY

# #35971

## Marine Data Sheet



### Alternator Options:

- Anti condensation heater
- 2x3 PTC for winding temperature
- Droop kit for parallel running
- 
- 
- 

### Alarm Equipment

Indication for individual alarm at following failures:

- Low lube oil pressure
- High lube oil temperature
- High cooling water temperature
- Low fuel oil pressure
- 
- Low cooling water pressure HT circuit
- 
- Over speed
- Options to customized as per clients requirements
- 
- 
- 
- 

### Dimensions

Height	mm	1850
Width	mm	1480
Length	mm	3390
Weight	kg	3250

### Certificates and Test run

The equipment will be tested according to classification rules in our workshop in Germany in the presence of the classification society (where applicable)

Delivery of certificate and test running certificate per ship:

- 1 No LIAG test report
- 1 No original classification certificate

1 Pcs technical files

### Spare Parts / Maintenance Books (per ship)

3 Sets of spare parts books for the engine in English.

3 Sets of spare parts- and maintenance books for the alternator in English.

3 Sets of specifications and drawings for the delivered equipment in English.

### Warranty

12 months after hand over to the owner, max. 24 months after readiness of dispatch from LIAG, whichever comes first.

### Painting

The set will be painted in light green colour RAL 6019

The control panel will be painted in grey colour RAL 7035

### Signs

All signs on the set will be in English

### Shut-Down Equipment

automatic shut down for following failures

- Over speed
- To high cooling water temperature
- To low lube oil pressure

### Equipment Delivered Loose (per ship)

Exhaust silencer 25dB and spark arrester

1 Pcs flexible exhaust expansion joint(s) with flanges, counter flanges and mounting kits.

### Control System

The Engine Control Panel is flexible mounted on right side of the set and equipped alarm, monitoring and control system according to the rules of classification society.

MADE IN GERMANY

# #35971

## Marine Data Sheet



### Construction

The diesel engine and alternator are connected through a flexible coupling and mounted on a common marine bed frame, manufactured of electro welded steel profiles. Vibration dampers are mounted between the set and the bed frame.

### Cooling System

Radiator cooler with fan drive

### Starting System

Electrical starter with two set batteries for 3 consecutive starts including battery charger and battery box.

### Notes

- 1) Generator specifications are subjected to change without prior notice
- 2) Fuel type for engine - MGO(DMX or DIN EN590)